

DCD CONSTRUCTORS

Exterior Housing Construction Solutions & Materials

GALLERY

Doc no.: DCD/CONS/HCS/APRIL/2023



THE PRODUCT SOLUTIONS AND MATERIALS

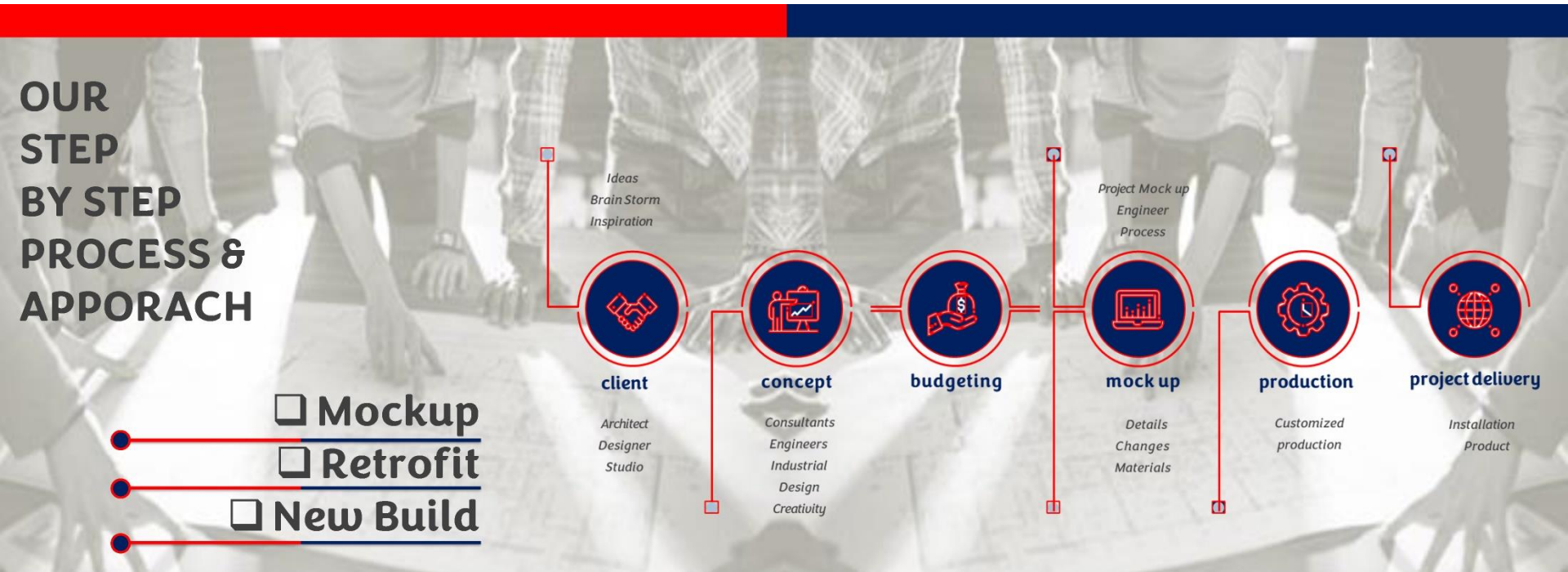
We offer and supply to our Customers and Housing Constructors the PSE Housing Construction Solutions and Materials, specifically the design and supply of:

- ✓ Aluminium Composite Panels,
- ✓ Curtain Building With Aluminium Composite Panels,
- ✓ Decorative Aluminium Composite Panels,
- ✓ A2 Fireproof Metal Composite Panels,
- ✓ Exterior & Interior Wall Panels,
- ✓ Medical Anti-bacteria Resistance Panels,
- ✓ Rainscreens,
- ✓ PS MPCLADO Profile Rances,
- ✓ PS MPINSTALL System Metal Rainscreen Cladding Series.

We also present the PS-MPINSTALL SYSTEM for the:

- ✓ Interaction & Perfection Of Metal Panel Technology; and
- ✓ the design perspectives for the: WINDOW POD System, Curved Panels, Honeycomb Wall System, REYNOBOND Panel System, Stone Faced Panel System, Rannila "Cassetti" Steel Wall System, and Metesc Structural Wall System

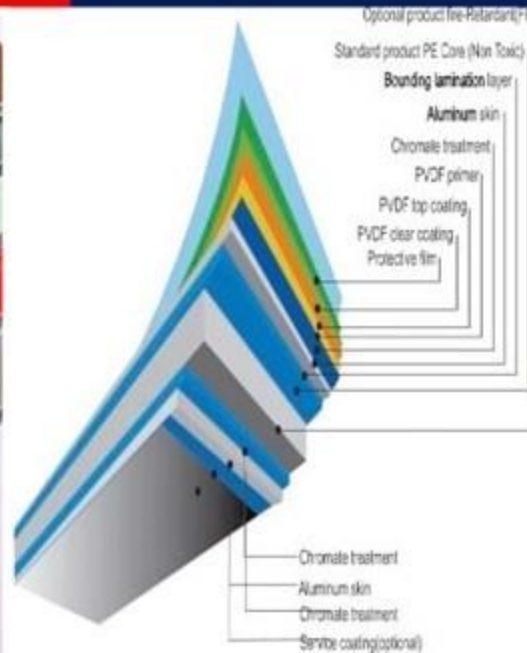
STEP-BY-STEP PROCESS & APPROACH



ALUMINIUM COMPOSITE PANEL

ALUMINUM COMPOSITE PANEL

PS Exteriors external and internal aluminum composite panel materials is favored by many architects and building owners for its economy benefit, diversity of color choices, convenient construction methods, excellent processing performance, excellent fire resistance and noble quality. PS Exteriors aluminum composite panel is made up of high-quality polyester lacquer and fluorocarbon coating. It has strong surface treatment adhesion, fine surface texture, bright, and excellent performance against acid and alkali weathering. It is widely used in building exterior wall and interior wall decoration.



Material Features

- ❑ **Small mass:** with the same rigidity and thickness, the density is smaller.
- ❑ **Good rigidity:** I-still structure, internal stress is stable.
- ❑ **Rich in color:** colorful surface coating.
- ❑ **High surface smoothness:** production by continuous thermal compounding.
- ❑ **Good durability:** strong bonding of aluminum and core material, strong weather resistance of surface coating.
- ❑ **Good processing performance:** different processing forms, adapt to different processing equipment.
- ❑ **Excellent fire resistance:** core material can be filled with non-combustible inorganic filler.
- ❑ **Good cost characteristics:** high production efficiency and low raw material cost.
- ❑ **Good environmental coordination:** 100% recycled materials, low environmental load.
- ❑ **Wide range of using:** building curtain wall, outdoor decoration and advertising, interior decoration, traffic track.

CURTAIN BUILDING WITH ALUMINIUM COMPOSITE PANELS

CURTAIN WALL BUILDING WITH ALUMINIUM COMPOSITE PANELS

Product Description

Thickness: The thickness of the upper and lower aluminum panels is not less than 0.5mm, the total thickness is not less than 4mm, and the aluminum alloy sheet of 3000/5000 series is generally used, and the coating is coated with fluorocarbon resin.

Coating: The topcoat of the exterior wall panel is a highly weather-resistant fluorocarbon resin coating, namely Polyvinylidene fluoride (PVDF). Its excellent UV resistance and environmental pollution keep the surface of the protected aluminum coil brilliant in colors.

Surface Color: There are rich color such as metallic color and marble pattern, and other colors can be customized.

MATERIAL PARAMETER

Specification (mm)	Plate Thickness (mm)	Aluminium Layer Thickness (mm)	Core Material	Coating
1220*2440	4	0.5	Raw material/Clinker/B1 fireproof material	Fluorocarbon/FEVE
1220*2440	5	0.5	Raw material/Clinker/B1 fireproof material	Fluorocarbon/FEVE
1220*2440	6	0.5	Raw material/Clinker/B1 fireproof material	Fluorocarbon/FEVE
More Customization				

MATERIAL FEATURERES

- ❑ Stronger weather resistance, good steel, light weight and high strength.
- ❑ Surface fluorocarbon roll coating treatment, superior corrosion resistance and weather resistance, easier process and transport. It can be processed into various complex geometries such as plane, arc and spherical surface.
- ❑ Highly fireproof sandwich structure, with excellent processing, thermal insulation, sound insulation and excellent fireproof performance.
- ❑ Environmental protection can be recycled and reused, beneficial to environmental protection.
- ❑ Easy to clean and not easy to stain, easy to clean and maintain.
- ❑ Fluorine coating film non-adhesive, so that the surface is difficult to adhere to contaminant and is easy to clean.

DECORATIVE ALUMINIUM COMPOSITE PANELS

DECORATIVE ALUMINIUM COMPOSITE PANELS

Product Description

Thickness: the thickness of the upper and lower aluminum plates of such products is 0.20mm each, and the minimum thickness is not less than 0.10mm and the total thickness is generally 3mm.

Coating: The coating adopts polyester or acrylic usually.

Surface Color: There are rich colors such as metallic color, marble pattern, high gloss, brushed, touch wood, etc and other customized colors can be supplied.

MATERIAL PARAMETER

Specification (mm)	Plate Thickness (mm)	Aluminum Layer Thickness (mm)	Core Material	Coating
1220*2440	3	0.18	Raw material/Clinker/B1 fireproof material	Polyester
1220*2440	3	0.21	Raw material/Clinker/B1 fireproof material	Polyester
1220*2440	3	0.3	Raw material/Clinker/B1 fireproof material	Polyester
More Customization				

MATERIAL FEATUERES

- ❑ Waterproof and moisture proof, mildew proof and insect proof, weather resistant and corrosion resistant.
- ❑ Green environmental protective material, food safety level, no formaldehyde, no odor, reduce the spread of respiratory bacteria, cut off contact bacterial transmission.
- ❑ Strong plasticity, it can bend and punch for hole, it can be used in addition to the floor and other cabinets and special shapes such as wall, cabinet, ceiling, sliding door can be further processed.
- ❑ Easy installation: fast contraction can be lived once finished installation.
- ❑ Super high fidelity texture: touch wood grain, high-gloss marble, etc you can customized a variety of patterns.
- ❑ Good flatness, light and strong, impact resistant, can reduce building load, and good shaking resistance.
- ❑ Easy to clean and maintain.

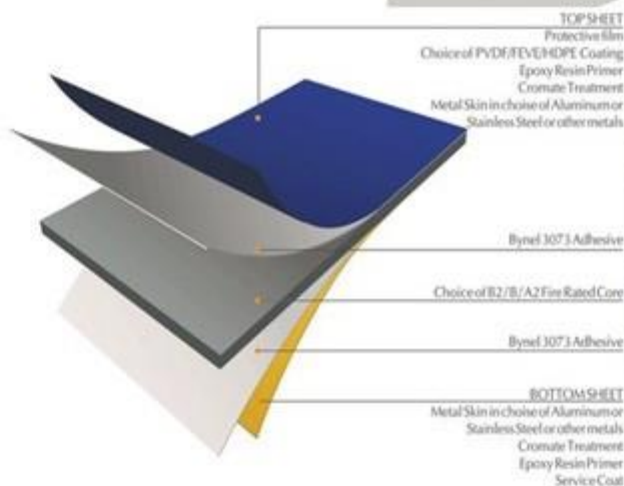
A2 FIREPROOF METAL COMPOSITE PANELS

A2 FIREPROOF METAL COMPOSITE PANELS

Product Description

A2 fireproof metal composite board is a kind of metal decoration material that uses non-combustible inorganic material as the core layer and the metal skin on both sides as the decorative surface, and is processed by a special process. It retains the excellent characteristics of traditional composite panels such as strong decoration, high cost performance, easy processing and easy installation, and overcomes the bottleneck of the previous aluminum-plastic composite panel products that cannot reach the non-combustible Class A. The fireproof insulation and prevent flame spread and other characteristics, PS Exterior aluminum composite panels can meet the different fire protection requirements of different countries, and are not restricted by any building height or use. It can be used not only in the field of architectural decoration, but also in other fields that have special requirements for sound insulation, fire prevention, radiation prevention, and antibacterial.

MATERIAL PARAMETER



MATERIAL FEATURERES

- ❑ **Rich performance effects:** provide solid colors, high gloss, low gloss, metallic color, flash colors, magic colors, 3D dimensional coating, natural art series such as wood grain, stone grain and other choices.
- ❑ **Metal surface options:** various metal surface composite plates: stainless steel/steel/nano self-cleaning aluminum/cooper/titanium zinc/anodized.
- ❑ **Green inorganic core material:** inorganic core material made of inorganic core material is natural, green and sustainable, it reduces metal and smelting energy consumption, reduces carbon emissions, and protects the earth's ecological environment.
- ❑ **Larger and more arbitrary plane division sizes:** Under the premise of ensuring the flatness of the board and other properties, the maximum board surface can reach a width of 2 meters, and the length is arbitrary, meeting the design requirements.
- ❑ **Good rigidity:** I-shaped structure is stable, flat and no deformation, and continuous production line is adopted for production.
- ❑ **Light Weight:** The composite technology reduces the weight of metal decorative materials, reduces the load of the building, and saving the cost of the foundation and the main structure.
- ❑ **EU A2 Fire Protection standard:** good fire safety performance, safe to use the high temperature of about 1200 degree Celsius, not burn through in 2 hours.
- ❑ **Extreme processing performance:** 90/135 V-shaped groove, plate can be bent 190/135, square groove, maximum bendable to 150°.
- ❑ **Wide range of uses:** Building curtain walls, indoor and outdoor decoration, advertising signs, rail transit and interior and exterior decoration of medical place.

EXTERNAL & INTERIOR WALL PANELS

EXTERNAL & EXTERIOR WALL PANELS

Product Description:
Thickness: Used in building curtain walls, general the total thickness is 3/4/5mm, the upper and lower aluminum skin thickness is 0.3/0.4/0.45/0.5mm 1/3/5 series alloy aluminum skin.

Coatings: For outdoor use, products requiring more than 10 years of surface quality assurance, it is recommended to choose the standard product PVDF/FEVE high weather resistance coating system. For indoor products or short-term outdoor products, PE coating system is recommended.

Surface color: standard color series-single color and metallic color series-natural color series-wood grain and stone grain series special color series-chameleon, flash color and self-cleaning function series.

MATERIAL PARAMETER

Standard Size (W*H)	1220*2440mm	1220*2440mm	More Customization	
	1250*2500mm	1250*2500mm		
	1500*3060mm	1500*3060mm		
	1500*4060mm	1500*4060mm		
Thickness	3mm	4mm	4mm	5mm
Plate Thickness	0.3*0.3mm	0.4*0.4mm	0.45*0.45mm	0.5*0.5mm
Core Material	FRA Non-Combustible grade inorganic fireproof core material (A2)			
Plate Material	Aluminium, Stainless Steel, Galvanized Steel, Copper, Titanium, Zinc			

MATERIAL FEATURERES

- ❑ **Green core material:** environmental protection and material savings: 10,000 square meters of aluminum curtain wall is replaced with aluminum composite panels, saving 54 tons of aluminum. The 10,000 square meters of stainless steel curtain wall is replaced by stainless steel composite panels, saving 70 tons of stainless steel.
- ❑ **Strong weather resistance:** The protective film can withstand weather resistance for six months. Under normal climatic conditions, within six months, the protective film will not lose its peeling characteristics or cause problem such as glue migration.
- ❑ **Good processability and light weight:** the composite technology reduces the weight of metal decoration materials, reduces the load of the building, and saves the cost of the foundation and the main structure.

INTERNAL & INTERIOR WALL PANELS

INTERNAL & INTERIOR WALL PANELS

Product Description:

Thickness: used in interior decoration wall panel, generally the total thickness is 3/4/5mm, the upper and lower aluminum skin thickness is 0.3/0.4/0.45/0.5mm series alloy aluminum skin.

Coating: For indoor products or short-term outdoor products, PE Coating system is recommended. Surface color: indoors and tunnels can also be beautiful, a variety of performance effects to choose.

From: standard color/chameleon/wood grain/stone color/imitation stainless steel wire drawing series/anodized series/self-cleaning function product series/stainless steel/copper/titanium panel.

MATERIAL PARAMETER

Standard	1220*2440mm	1220*2440mm	More Customization	
Size	1250*2500mm	1250*2500mm		
(W*H)	1500*3060mm	1500*3060mm		
	1500*4060mm	1500*4060mm		
Thickness	3mm	4mm	4mm	5mm
Plate Thickness	0.3*0.3mm	0.4*0.4mm	0.45*0.45mm	0.5*0.5mm
Core Material	FRA Non-Combustible grade inorganic fireproof core material (A2)			
Plate Material	Aluminium, Stainless Steel, Galvanized Steel, Copper, Titanium, Zinc			

MATERIAL FEATUERES

- ☐ Superior strength, impact resistance
- ☐ Interior decoration is safe and assured: antibacterial, mildew, acid and alkali resistant, non-toxic and formaldehyde-free
- ☐ Safe and environmentally friendly, no discoloration, no mold, no radiation
- ☐ Can be cleaned, can be partially replaced, and construction is convenient.
- ☐ Fine processing, convenient molding, and on-site molding processing.
- ☐ Class A fireproof composite board has strong weather resistance, and the problems of humidity and dryness caused by weather. The sapphire grade hardness of the sheet is about 6H, scratch and wear resistance. The color will last for 30 years without fading or aging.

MEDICAL ANTI-BACTERIA RESISTANCE PANELS

INTERNAL & INTERIOR WALL PANELS

Product Description:

Thickness: used in interior decoration wall panel, generally the total thickness is 3/4/5mm, the upper and lower aluminum skin thickness is 0.3/0.4/0.45/0.5mm series alloy aluminum skin.

Coating: For indoor products or short-term outdoor products, PE Coating system is recommended. Surface color: indoors and tunnels can also be beautiful, a variety of performance effects to choose.

From: standard color/chameleon/wood grain/stone color/imitation stainless steel wire drawing series/anodized series/self-cleaning function product series/stainless steel/copper/titanium panel.

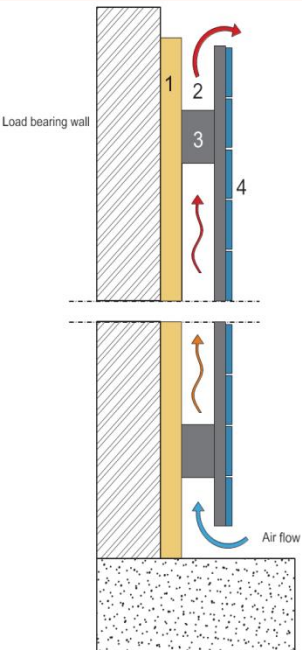
MATERIAL PARAMETER

Standard	1220*2440mm	1220*2440mm	More Customization	
Size	1250*2500mm	1250*2500mm		
(W*H)	1500*3060mm	1500*3060mm		
	1500*4060mm	1500*4060mm		
Thickness	3mm	4mm	4mm	5mm
Plate Thickness	0.3*0.3mm	0.4*0.4mm	0.45*0.45mm	0.5*0.5mm
Core Material	FRA Non-Combustible grade inorganic fireproof core material (A2)			
Plate Material	Aluminium, Stainless Steel, Galvanized Steel, Copper, Titanium, Zinc			

MATERIAL FEATUERES

- ☐ Superior strength, impact resistance
- ☐ Interior decoration is safe and assured: antibacterial, mildew, acid and alkali resistant, non-toxic and formaldehyde-free
- ☐ Safe and environmentally friendly, no discoloration, no mold, no radiation
- ☐ Can be cleaned, can be partially replaced, and construction is convenient.
- ☐ Fine processing, convenient molding, and on-site molding processing.
- ☐ Class A fireproof composite board has strong weather resistance, and the problems of humidity and dryness caused by weather. The sapphire grade hardness of the sheet is about 6H, scratch and wear resistance. The color will last for 30 years without fading or aging.

PS RAINSCREEN PRINCIPLES



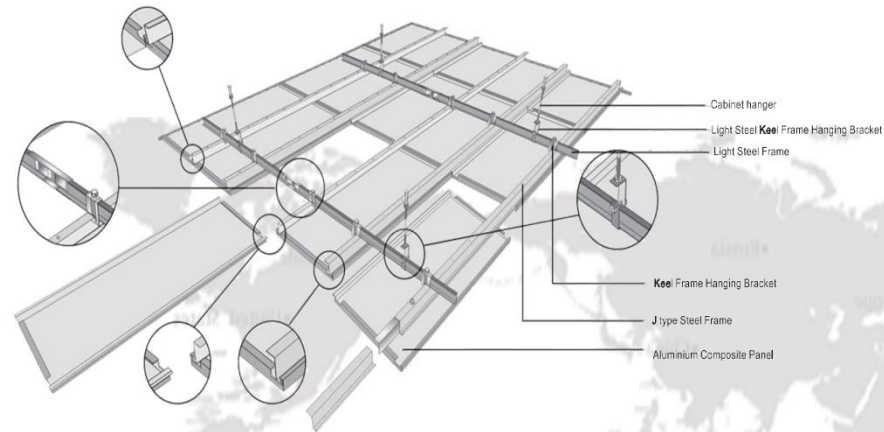
OUR RAINSCREEN PRINCIPLES

Our Ventilated wall cladding is made of several elements which are added to the load bearing wall of the building structure with:

1. Thermal insulation layer of different thicknesses according to energy requirements
2. Rear ventilated cavity
3. Adjustable sub-frame which determines the distance from the main wall.
4. External rainscreen cladding which provides technical performances protecting the building against weather conditions.

This construction method has considerable ecological and economical benefits:

- a) PS Exteriors ventilated wall cladding increase the lifetime of the building
- b) The outside wall of the building and thermal insulation layer remain dry
- c) The ventilated wall cladding gives excellent protection against heat and cold ensuring a comfortable internal environment
- d) This cladding method is an energy-saving façade leading to minimum carbon dioxide discharge
- e) Protection against acoustic pollution



PS MPCLADO PROFILES RANGES

PS MPCLADD PROFILES RANGES

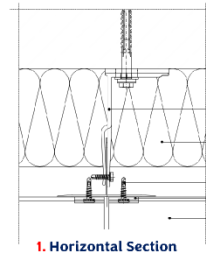
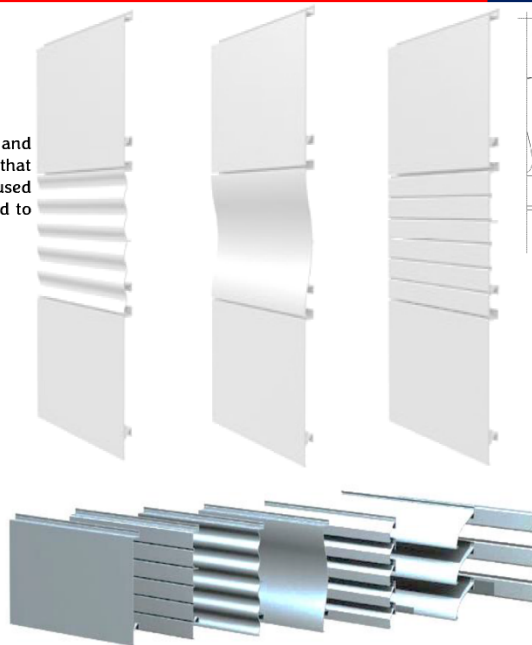
PS Exteriors extruded architectural envelope panels and louver systems comes in different profiles and shapes, that can fit any architectural design concepts and can also be used in various mixed combinations. Many other can be added to increase even further design possibilities.

Our architectural panels and louver system can be used in different design APPLICATIONS

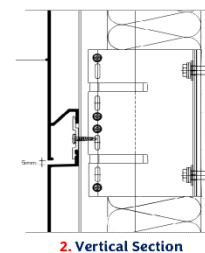
1. Metal panel & rainscreen cladding,
2. interior cladding,
3. louver screen wall,
4. ceiling,
5. parapets,
6. fences & stands, etc

Our customized architectural envelope panel and louver systems series

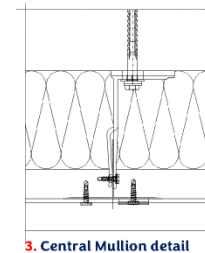
- a. PS10 MPCLADD – Flat surface profile
- b. PS20 MPCLADD – Flat profile with horizontal grooves
- c. PS30 MPCLADD – Sinusoidal profile
- d. PS40 MPCLADD – Concave/Convex profile
- e. PSLOUVS1 – Louver Blade
- f. PSLOUVS2 – Sunshade Louver Blade
- g. PSLOUVS3 – Louvers screen



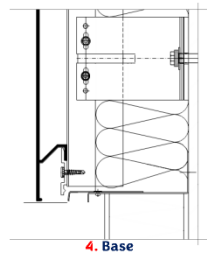
1. Horizontal Section



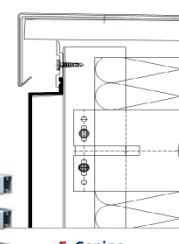
2. Vertical Section



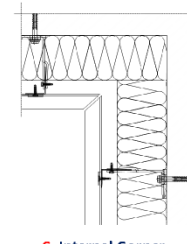
3. Central Mullion detail



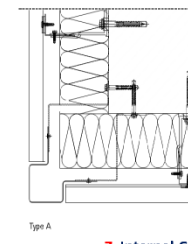
4. Base



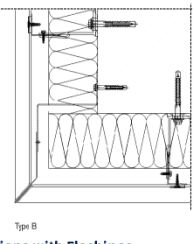
5. Coping



6. Internal Corner



Type A



Type B

7. Internal Corner options with Flashings

PS MPINSTALL SYSTEM METAL RAINSCREEN CLADDING SERIES

PS MPINSTALL SYSTEM METAL RAINSCREEN CLADDING SERIES

PS-MPINSTALL system is world-class engineered, prefabricated, A1 mineral wool-insulated, metal panel façade cladding system that offers a through wall solution within a single piece of construction element. This metal panel façade cladding elements comes with rounded corners, unmatched flatness and advanced technical characteristics place PS-MPINSTALL is among the best metal panel façade cladding façade systems in the world of architectural envelopes system.

TOTAL WALL SOLUTION

- Single component pre-engineered and pre-fabricated construction element
- Self-supporting column to column horizontal or floor to floor vertical installation

LIMITLESS DESIGN POSSIBILITIES

- Extensive range of interfaces and bespoke elements
- Integrated windows, doors and louvers systems
- Prefabricated corners and rounded corners without cuts, folds or welds
- 3D corner elements, curved elements, trapezoidal elements
- Extreme flatness
- Multiple joint possibilities

MAXIMUM SAFETY

- Class A1 non-combustible mineral wool insulation core
- High-level insulation values as low as 0.15 W/M2k
- Fire resistance: up to class EI 120 minutes integrity and insulation
- Watertightness up to 1200 Pa
- Flexible coating guaranteed up to 20 years and lifetime expectancy up to 25 years*

JOINT OPTIONS FOR HORIZONTAL INSTALLATION



PS1 MPINSTALL



PS2 MPINSTALL



PS3 MPINSTALL



PS4 MPINSTALL



PS5 MPINSTALL



PS6 MPINSTALL

JOINT OPTIONS FOR VERTICAL INSTALLATION



PS7 MPINSTALL



PS8 MPINSTALL



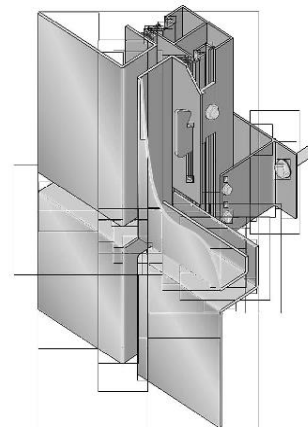
PS9 MPINSTALL



PS10 MPINSTALL

JOINT OPTIONS

PS MPINSTALL system allows various combinations of recessed and flushing joints.



PS EXTERIORS PRODUCT DISPLAY

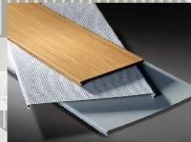
PS EXTERIORS PRODUCT DISPLAY



Invisible Side Frame Panel



Visible Side Frame Panel



C-Shaped Panel



S-Shaped Panel



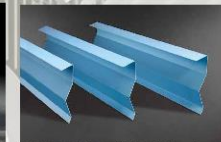
V-Shaped Tube



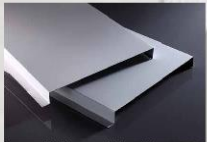
Circular Tube



S-Shaped Lacing Film



Conventional Bevel Lacing Film



G-Shaped Buckle Panel



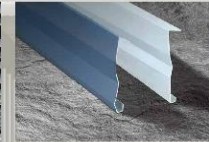
H-Shaped Panel



Standard Type Grille



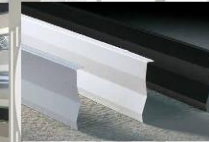
Triangular Grilles



Bevel S-Shaped Lacing Film



Water Drop Lacing Film



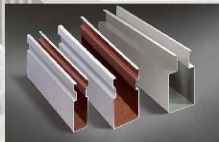
Right-Angle Lacing Film



Louvers Screens



U-Shaped Tube Panel



Convex type Panel



Arc type tube Panel



Tube Profile Panel



Window Pod Panel



Laser-cut and Solid Screens



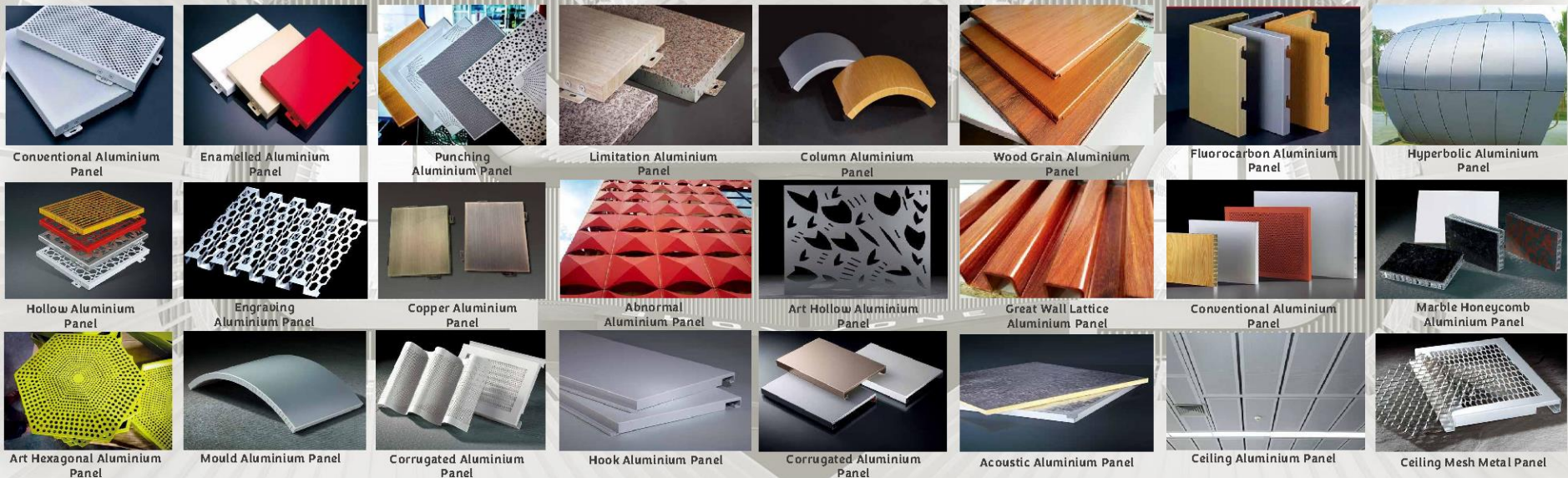
Brise Soleil



Decorative Blossom

PS EXTERIORS PRODUCT DISPLAY

PS EXTERIORS PRODUCT DISPLAY

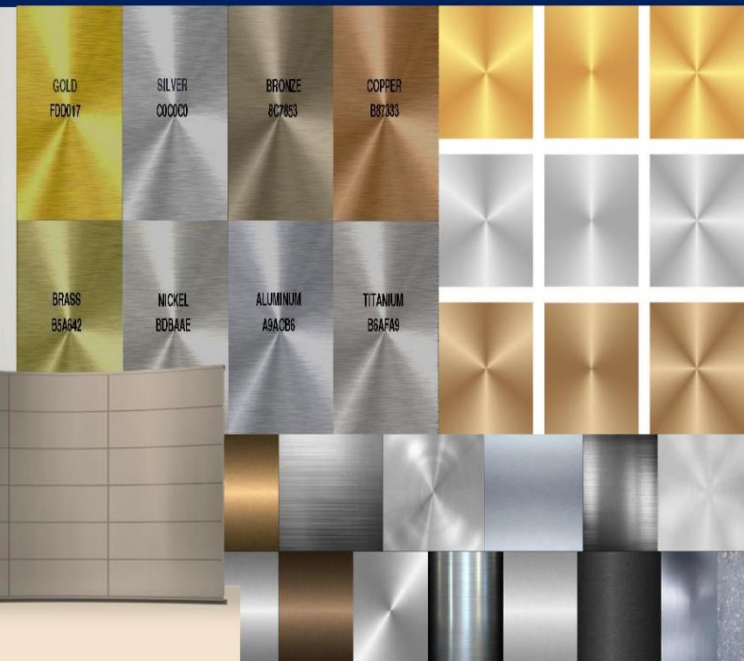


PRODUCT SOLUTION COLOUR RANGE

COLOUR RANGE

External metal panel and rainscreen skin is available for different corrosion environments of up to C5 (according to classification in EN12944) and is available in a variety of colors.

SOLID COLOURS + SPECIAL METALLIC + STAINLESS STEEL



PS-MPINSTALL SYSTEM

THE INTERACTION & PERFECTION OF METAL PANEL TECHNOLOGY

PS-MPINSTALL SYSTEM

THE INTEGRATION & PERFECTION OF METAL PANEL TECHNOLOGY

PS- MPINSTALL concealed fixed aluminum cassette panel system, designed to hung on an extruded aluminum carrier rail, which is fixed to the structural support wall by means of adjustable wall brackets.

PS- MPINSTALL can be used effectively on both new build projects and also as an over cladding to up- grade existing structures. These three dimensional designed adjustment makes it possible to introduce feature details and to easily deal with irregular building surfaces.

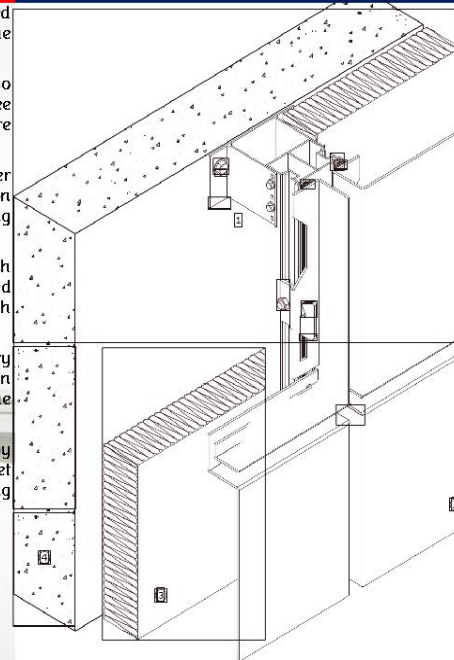
Our research and case studies has proven us right with a range of deeper wall brackets, it is always possible to use a greater thickness of insulation to meet or exceed the U values required by the current Building Regulations.

All our cassette trays are well designed and precision made for each contract and the façade can be completed with specific project designed cills, flashings closers etc. all manufactured and finished to the same high standards.

PS Exteriors can also customized and manufacture all other necessary architectural façade detail products such as Window Pods, Column Casings, Soffits, Aerofoil Edgings, and flashings and closers to meet the design team requirements.

PS- MPINSTALL system has been developed to meet the demand by Architects and Contractors for a precision made product, which can meet all the necessary statutory structural, thermal, acoustic, and weathering criteria, and therefore offer the following features and benefits.

DURABILITY
ABILITY TO WITHSTAND HIGH WIND LOADS
PANEL FLATNESS
RANGE OF PANEL SIZES NEW BUILD
OVER-CLADDING
VALUE ENGINEERED SOLUTIONS



PS- MPINSTALL DESIGN PERSPECTIVE

1. Hanging System
2. Rainscreen Cassette Panel
3. Back-up Insulation
4. Concrete Support Wall



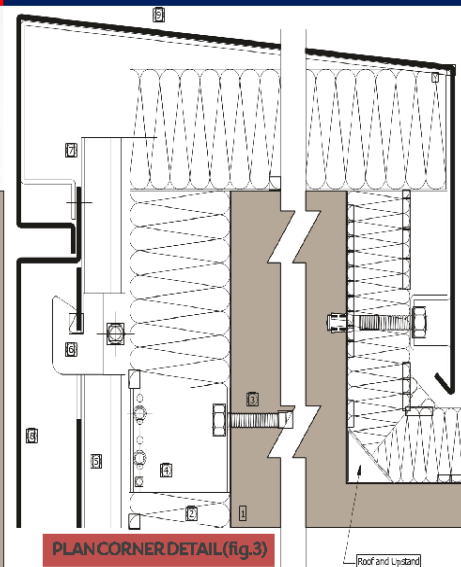
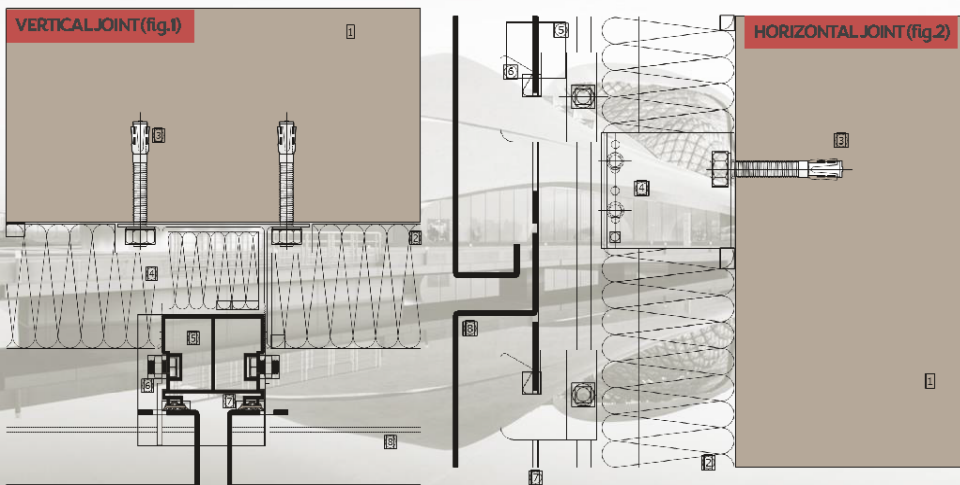
PS-MPINSTALL SYSTEM

THE INTERACTION & PERFECTION OF METAL PANEL TECHNOLOGY

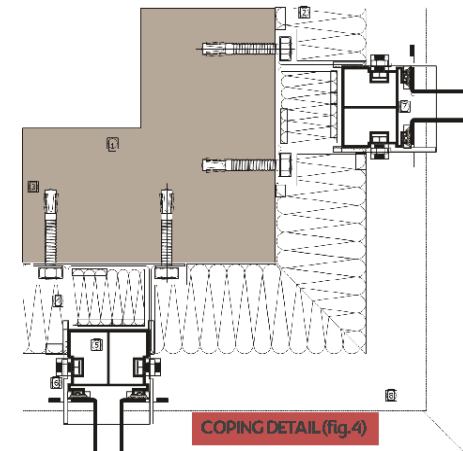
PS- MPINSTALL SYSTEM

THE
INTEGRATION
& PERFECTION
OF METAL PANEL TECHNOLOGY

- | | |
|-----------------|------------------------------|
| 1.Support Wall | 5. Mullion |
| 2. Insulation | 6. Hook |
| 3. Wall Fixing | 7. EPDM Gasket |
| 4. Wall Bracket | 8. Rainscreen Cassette Panel |



- | | |
|-----------------|------------------------------|
| 1.Support Wall | 5. Mullion |
| 2. Insulation | 6. Hook |
| 3. Wall Fixing | 7. EPDM Gasket |
| 4. Wall Bracket | 8. Rainscreen Cassette Panel |



PS-MPINSTALL SYSTEM

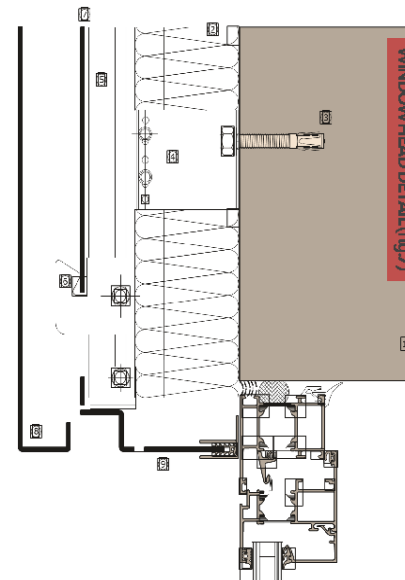
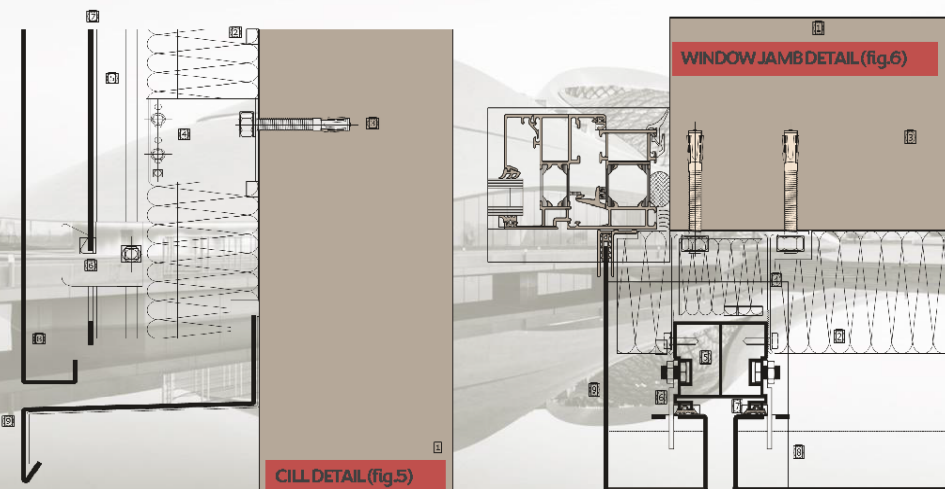
THE INTERACTION & PERFECTION OF METAL PANEL TECHNOLOGY

PS- MPINSTALL SYSTEM

THE
INTEGRATION
& PERFECTION
OF METAL PANEL TECHNOLOGY

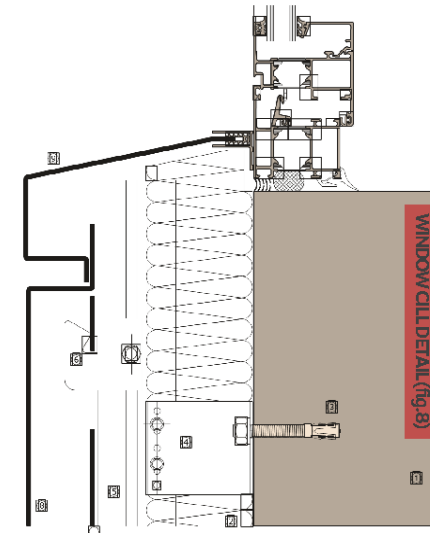
1. Support Wall
2. Insulation
3. Wall Fixing
4. Wall Bracket

5. Mullion
6. Hook
7. EPDM Gasket
8. Rainscreen Cassette Panel



1. Support Wall
2. Insulation
3. Wall Fixing
4. Wall Bracket

5. Mullion
6. Hook
7. EPDM Gasket
8. Rainscreen Cassette Panel



PS-MPINSTALL DESIGN PERSPECTIVE FOR WINDOW POD

PS- MPINSTALL DESIGN PERSPECTIVE FOR WINDOW POD

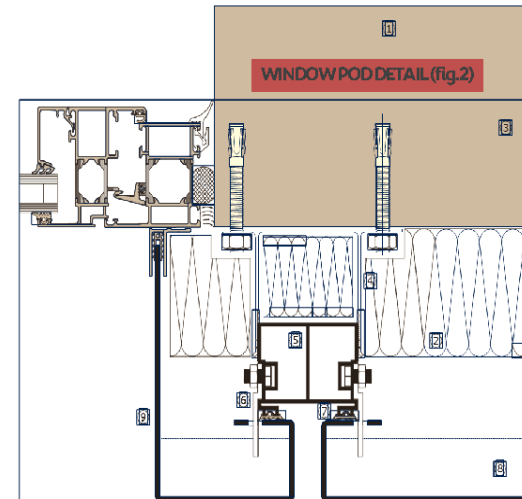
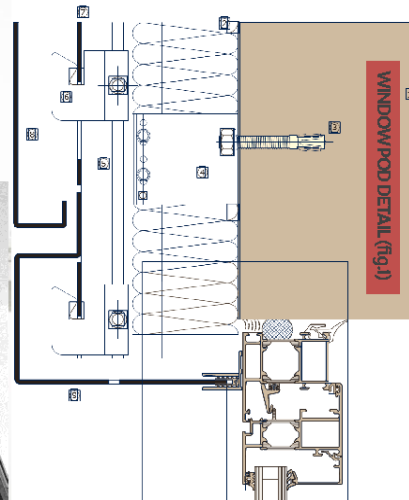
1. Hanging System
2. Rainscreen Cassette Panel
3. Back-up Insulation
4. Concrete Support Wall



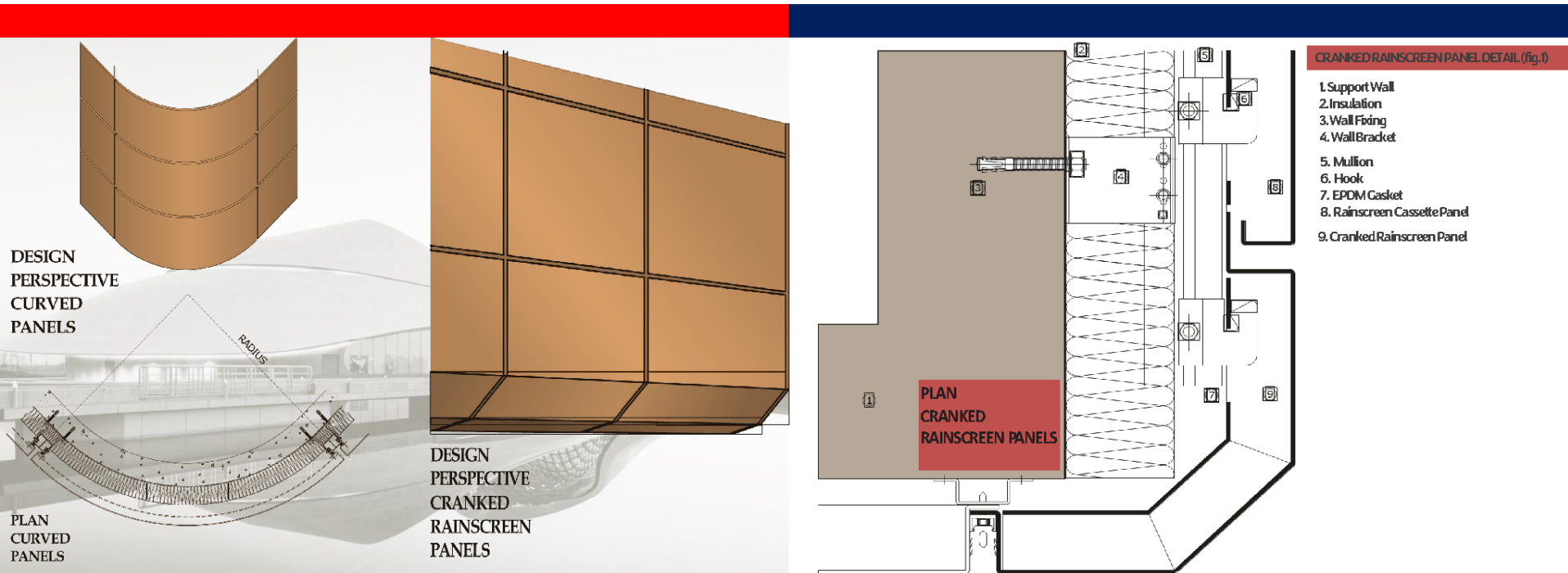
1. Support Wall
2. Insulation
3. Wall Fixing
4. Wall Bracket

5. Mullion
6. Hook
7. EPDM Gasket
8. Rainscreen Cassette Panel

9. Window Pod

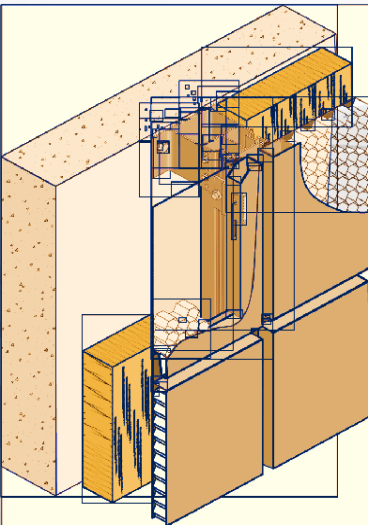


DESIGN PERSPECTIVE CURVED PANELS



DESIGN PERSPECTIVE HONEYCOMB WALL SYSTEM

DESIGN PERSPECTIVE HONEYCOMB WALL SYSTEM



PS-PMINSTALL FOR HONEYCOMB,

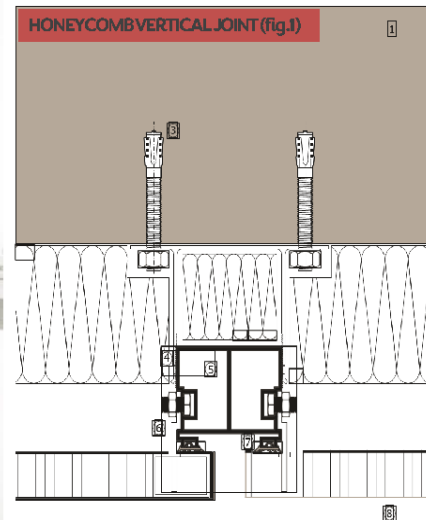
To further compliment the range of excellent single skin metal cassette type of architectural envelope panel cladding PS Exteriors have further developed unique methods of using other different materials to create unique façade finishes and effects never like before to architects, designers and building owners.

HONEYCOMB CORES The high strength to weight ratio of an expanded aluminium honeycomb matrix makes it an ideal material to use in the creation of extremely flat large format rainscreen panels from thin skin pre-coated metals and natural metal finishes, such as stainless steel, zinc and copper.

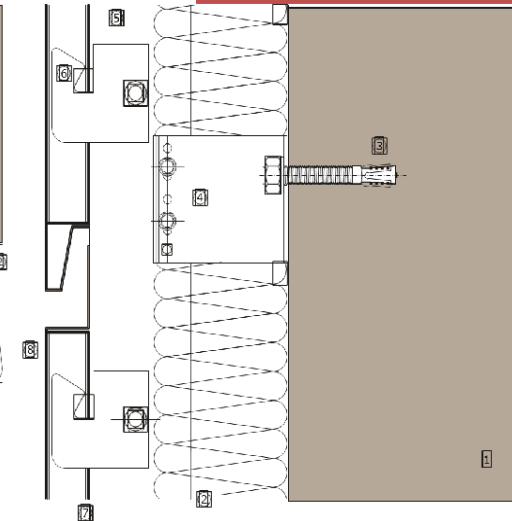
The skills and experienced gained from our years of manufacturing and production PS Exteriors have achieved the highest quality in fully bonded composite architectural envelope wall cladding panels used in the design and fabrication in today new generation of honeycomb cored high performance rainscreen panels and support systems.

DESIGN FREEDOM Along with the traditional finishes of PPC and Anodized aluminium PS Exteriors are now offering the widest range of materials and finishes available in the construction industry along with full design advice and technical back-up to help the design team to fully realise their design concepts.

- | | |
|-----------------|------------------------------|
| 1. Support Wall | 5. Mullion |
| 2. Insulation | 6. Hook |
| 3. Wall Fixing | 7. EPDM Gasket |
| 4. Wall Bracket | 8. Rainscreen Cassette Panel |

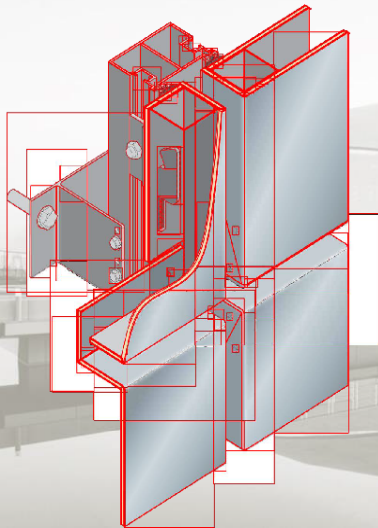


HONEYCOMB HORIZONTAL JOINT (fig.2)



DESIGN PERSPECTIVE REYNOBOND PANEL SYSTEM

DESIGN PERSPECTIVE REYNOBOND PANEL SYSTEM



PS-PMINSTALL FOR REYNOBOND PANELS

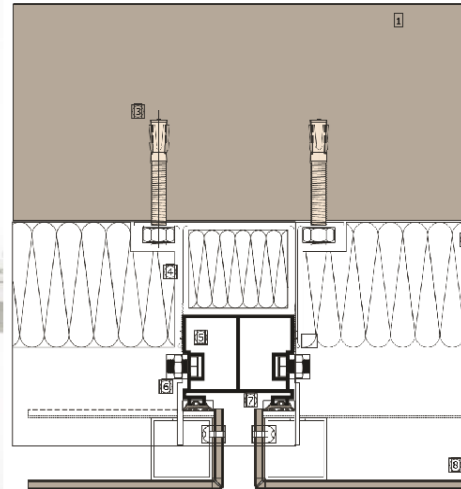
To further compliment the range of excellent single skin metal cassette type of architectural envelope panel cladding PS Exteriors have further developed unique methods of using other different materials to create unique façade finishes and effects never like before to architects, designers and building owners.

ALUMINIUM COMPOSITE MATERIALS: Renobond ACM is a metal+polyethylene+metal composite material which again uses the composite beam effect to create a very light weight but extremely strong and flat material which is easily cut and formed into cassettes and trays.

One of the main advantages of this type of material is the wide range of metal finishes available as the outer face including Pduf painted aluminium, natural brushed aluminium, stainless steel, titanium and natural zinc.

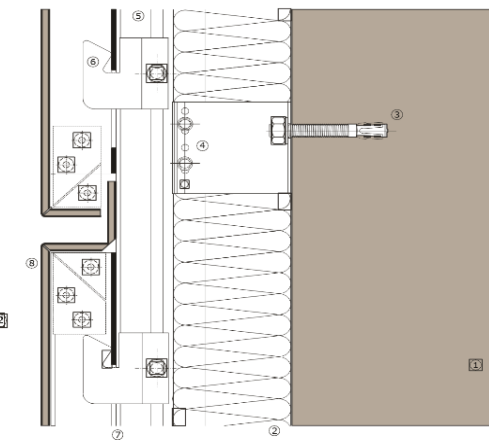
DESIGN FREEDOM Along with the traditional finishes of PPC and Anodized aluminium PS Exteriors are now offering the widest range of materials and finishes available in the construction industry along with full design advice and technical back-up to help the design team to fully realise their design concepts.

- | | |
|-----------------|-----------------------------|
| 1. Support Wall | 5. Mullion |
| 2. Insulation | 6. Hook |
| 3. Wall Fixing | 7. EPDM Gasket |
| 4. Wall Bracket | 8. Reynobond Cassette Panel |



VERTICAL JOINT DETAIL WITH REYNOBOND PANEL (fig.1)

HORIZONTAL JOINT DETAIL WITH REYNOBOND PANELS (fig.2)



DESIGN PERSPECTIVE STONE FACED PANEL SYSTEM

DESIGN PERSPECTIVE STONE FACED PANEL SYSTEM

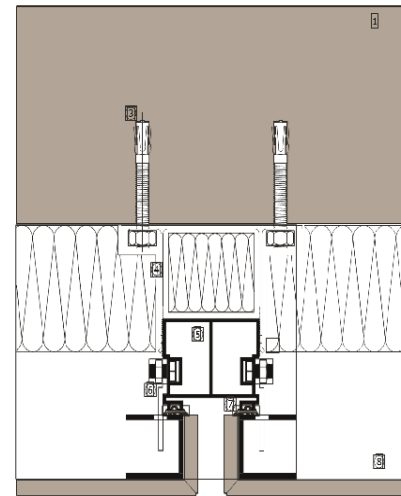
PS-PMINSTALL FOR STONECASSETTE PANELS

To further compliment the range of excellent single skin metal cassette type of architectural envelope panel cladding PS Exteriors have further developed unique methods of using other different materials to create unique façade finishes and effects never like before to architects, designers and building owners.

PETRARCH FACED RAINSCREEN PANELS The Petrarch range of high strength resin bonded stone effect boards can now be offered as a rainscreen panel finish unique to PS Exteriors. Used for impact and damage resistance at low level or to meet a planning requirement this versatile product opens up many more possibilities for the architect and designer.

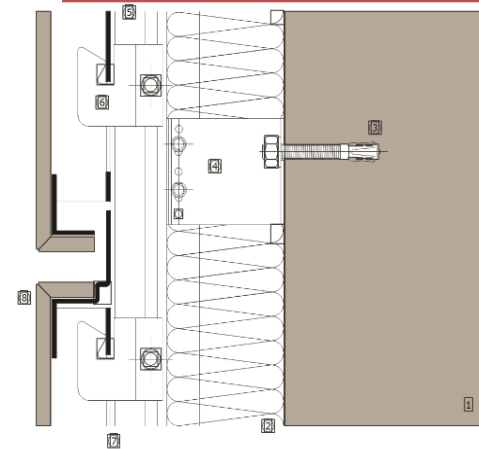
DESIGN FREEDOM Along with the traditional finishes of PPC and Anodized aluminum PS Exteriors are now offering the widest range of materials and finishes available in the construction industry along with full design advice and technical back-up to help the design team to fully realise their design concepts.

- | | |
|-----------------|-------------------------------|
| 1. Support Wall | 5. Mullion |
| 2. Insulation | 6. Hook |
| 3. Wall Fixing | 7. EPDM Gasket |
| 4. Wall Bracket | 8. Stone Faced Cassette Panel |



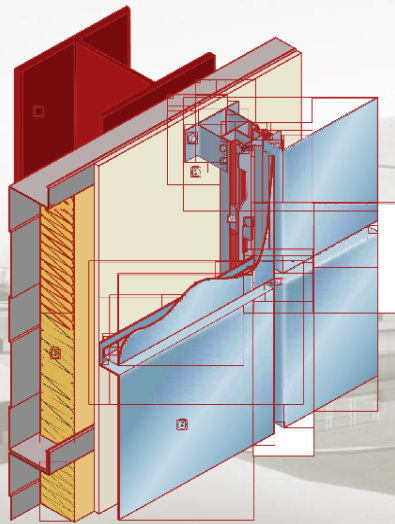
VERTICAL JOINT DETAIL WITH STONE FACED PANEL (fig.1)

HORIZONTAL JOINT WITH STONE FACED PANEL (fig.2)



DESIGN PERSPECTIVE RANNILA "CASSETTI" STEEL WALL SYSTEM

DESIGN PERSPECTIVE RANNILA 'CASSETTI' STEEL WALL SYSTEM



LIGHTWEIGHT STRUCTURAL WALL SYSTEMS:

In a new build or comprehensive refurbishment project it often desirable or necessary to use a lightweight structural walling system to quickly close in the structure and to support the rainscreen. These are made up from our factory manufactured structural elements which can be quickly installed on site and provide a structural support for the PS- MPINSTALL rainscreen system.

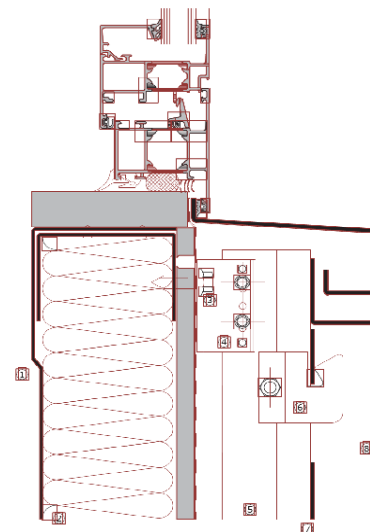
There are two basic methods to achieve and desired architectural appearance

STRUCTURAL STEEL CASSETTE TRAYS. PS- MPINSTALL Wall and structural trays are available in 600mm wide modules and a range of steel thicknesses and tray depths to met the most onerous wind loads and dead loads. When given the relevant site data on building height, wind loads etc., PS Exteriors engineers will provide calculations for each project. Spanning up to 7200mm horizontally between main vertical supports the trays interlock to give excellent air sealing, and provide a compartment space for insulation batts to meet or better the U values required by the current Building Regulations. Additional layers of external weather boarding or internal plasterboard can be used to improve the insulation and acoustic performance. All necessary support and interface details for windows, curtain walling and the PS- MPINSTALL rainscreen can be detailed specific to each project.

Care needs to be taken when working up the design on deciding how to provide fixing points for the wall support brackets which carry the rainscreen system.

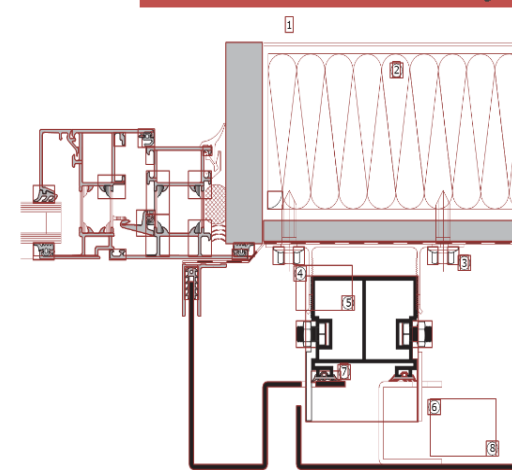
DESIGN OF WALLING ELEMENTS: The design team must carry out reviews of the performance and specification of all the walling elements to ensure compliance with all Building Codes and National Building Regulations

1. Support Wall
2. Insulation
3. Wall Fixing
4. Wall Bracket
5. Mullion
6. Hook
7. EPDM Gasket
8. Steel Wall Cassette Panel



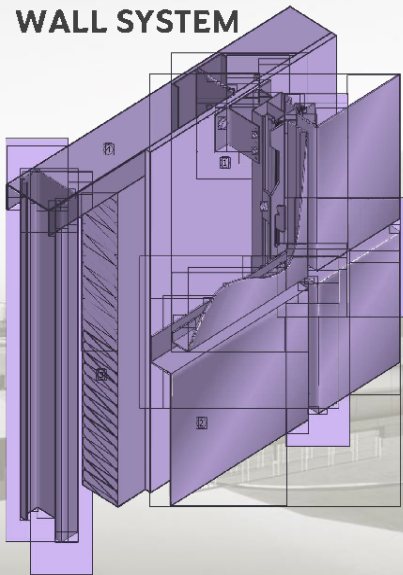
RANNILA 'CASSETTI' STEEL WALL SYSTEM(fig.1)

RANNILA 'CASSETTI' STEEL WALL SYSTEM(fig.2)



DESIGN PERSPECTIVE METESC STRUCTURAL WALL SYSTEM

DESIGN PERSPECTIVE METESC STRUCTURAL WALL SYSTEM



METESC COLD ROLLED SECTION WALLING:

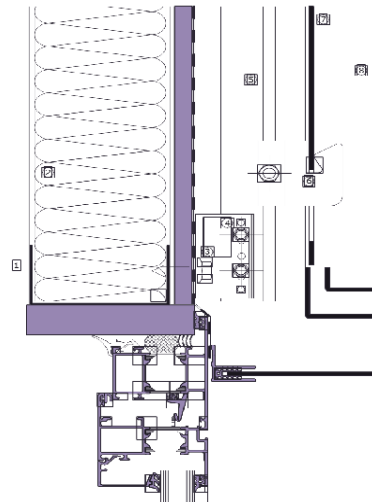
Designed specifically for each project these cold rolled galvanised steel sections are used to form a prefabricated wall usually spanning from floor to floor. The Metesc sections can support the internal plasterboard layers as well as providing the zone for the insulation material and any acoustic layers. The light weight steel sections can be site assembled or made up into pre-fabricated walling elements for craning into position and securing to the primary structure. Once again this system can also deal with all the necessary project specific loads, and interface details for windows, curtain walling and PSMINSTALL rainscreen.

Care needs to be taken when working up the design on deciding how to provide fixing points for the wall support brackets which carry the rainscreen system.

DESIGN OF WALLING ELEMENTS:

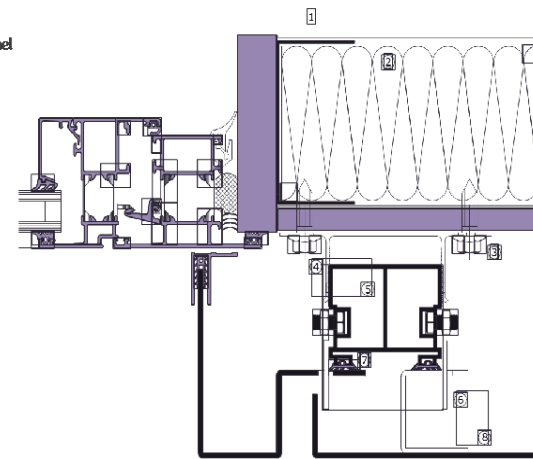
The design team must carry out reviews of the performance and specification of all the walling elements to ensure compliance with all Building Codes and National Building Regulations

1. Support Wall
2. Insulation
3. Wall Fixing
4. Wall Bracket
5. Mullion
6. Hook
7. EPDM Gasket
8. METESC Structural Panel



METESC STRUCTURAL SUPPORT WALL (fig.1)

METESC STRUCTURAL SUPPORT WALL (fig.2)



OUR BUSINESS CONTACTS

Our Business Office:

DCD CONSTRUCTORS

38 Prior Hall, Spawell Road,
Wexford Town, Y35 X2A2

Rep. of Ireland

For Support Inquiries:

support@dcdconstructors.com

For Sales Inquiries:

sales@dcdconstructors.com

To be a Partner:

partner@dcdconstructors.com

Visit our Website:

www.dcdconstructors.com

Phone Contact:

+353 87 11 99906

